

SMOKY HILL EXPRESS

Elbert County Historical Society & Museum Newsletter

FALL 2024

IN THIS ISSUE

150th Anniversary Big Celebration ...3
Centennial Banquet4
Colorado Gives Day3
Friday Night/Brewery Tour5
Friends of the Museum3
Memberships/Sponsorships2
Museum Sponsors6
Who Am I2

**THE MUSEUM IS CLOSED
FOR THE WINTER.**

**REOPENING
SUNDAY, MAY 25, 2025!**

UPCOMING EVENTS

**Elbert County Museum
Host Orientation**
Saturday, May 17, 9:00 am
Elbert County Museum Assembly Room

**Elbert County Museum
2025 Opening Day**
Sunday, May 25, 1:00 - 4:00 pm

Pioneer Fourth Celebration 2025
Friday, July 4, 10:00 am - 3:00 pm
Elbert County Museum Grounds

Annual Membership Meeting 2025
Saturday, September 6, 9:00 am
Elbert County Museum Office

**DONATE NOW
THROUGH
COLORADOGIVES.ORG**

2024 SEASON HIGHLIGHTS

Elbert County's Sesquicentennial was the big event this year. ECHS played a large role in the 150th Anniversary Celebration activities by participating in the "150th Anniversary Train Ticket" program that encouraged people to explore one-of-a-kind Elbert County venues and summertime events to get their ticket stamped, providing a "pop-up museum" exhibit that traveled across the county during the summer, and co-presenting the first annual Elbert County Centennial Farms & Ranches Banquet - an evening honoring Elbert County's Centennial Farm and Ranch families (see story on page 4).

Closer to home, early in the spring museum volunteers worked to create a fun and eclectic collection of items, artifacts and stories stemming back to the county's early days for its summer exhibit. The ***Elbert County 150 Years!*** exhibit featured a variety of topics stemming from pioneer lawlessness including Hangman's Point and the Hungate and Dietemann Massacres; to trailblazing professions such as doctors, homesteaders, law and order, merchants and shopkeepers; to the popular rise in recreational pastimes like the county fair, traveling theatre troupes, movie houses and the organization of town bands and ball teams. The debut of a large frontier county map locating cemeteries, trails, post offices, trains and other features, with an accompanying panel containing the history and photographs of early settlements was also a popular attraction.



VOLUNTEERS GOT A BEHIND-THE-SCENES SNEAK PEEK AT THE SUMMER EXHIBIT DURING THE HOST ORIENTATION IN MAY.

watermelon eating contest. Thank you to our amazing group of volunteers, we appreciate your time and talents in making this annual event such a success!

This year's Pioneer Fourth Celebration was our largest to date with attendance topping nearly 700 people! Perfect weather, delicious food, fun-packed games and great live music entertained the crowds all afternoon. A steady stream of visitors toured the museum, enjoyed the BBQ lunch and participated in the cake walk, kid's games, pie baking contest & auction, trivia contest, silent auction and

Continued on page 3



ELBERT COUNTY HISTORICAL SOCIETY & MUSEUM

JOE MARTELL

President

DEBBIE SCOGGIN

Secretary

PATSY NORTH

Board Member at Large

CARLA MARTELL

Past President

DONNA SMITH

Vice President

HANK SMITH

Treasurer

SARAH MALERICH

Board Member at Large

ELBERT COUNTY HISTORICAL SOCIETY

515 Comanche Street • PO Box 43
Kiowa, Colorado 80117

ElbertCountyMuseum.org

The Elbert County Museum is owned and operated by the Elbert County Historical Society, a 501 (c)(3) non-profit organization.

MISSION STATEMENT

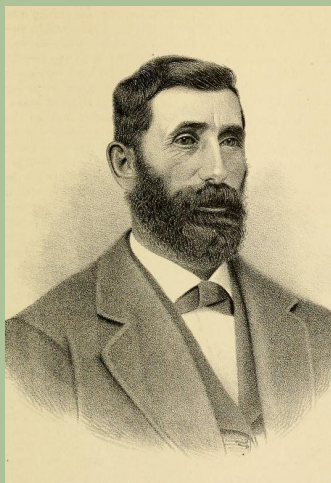
To record and maintain the history of Elbert County, Colorado from the earliest settlement.

To work for the establishment of appropriate vaults and archives for the preservation of original manuscripts, documents, photographs and artifacts which may come into the possession of the Society.

To maintain, preserve and house the above stated articles in the Elbert County Museum.

WHO AM I?

1. How many siblings did I have?
 - a) Eleven
 - b) Eight
 - c) Five
2. What profession did I not work in?
 - a) Dairy
 - b) Stone Quarry
 - c) Tailor
3. Whose sister did I marry?
 - a) Alexander Brazelton
 - b) Apollinaris Dietemann
 - c) August Neuman



Answers on page 5

MEMBERSHIP LEVELS

Individual -\$15

Student/Senior -\$8

Family -\$20

Volunteer -Donation of six (6) hours of volunteer time or participate in two (2) functions and/or events.

SEASON SPONSORSHIPS

Museum Season Sponsorships are collected annually and expire at the end of each calendar year. Sponsorships support the general operating fund, new and permanent exhibits, development of educational initiatives and public programs, and the historic museum building and its infrastructure.

Season sponsorships are available at four different levels and are identified by icons of early Elbert County industry

LOCOMOTIVE-

Contributions of \$200 cash/merchandise or more will receive:

- acknowledgment as a Season Sponsor on all exhibit and event flyers (including Pioneer Fourth)
- recognition on signage inside the museum and at the Pioneer Fourth
- inclusion in the newsletter(s) and
- on our website



PONDEROSA PINE-

Contributions of \$100 cash/merchandise or more will receive:

- recognition on signage inside the museum
- inclusion in the newsletter(s) and
- on our website



WINDMILL-

Contributions over \$25 cash/merchandise will receive:

- recognition on signage inside the museum
- inclusion in the newsletter(s)



CULTIVATOR-

Contributions of \$250 cash or more through the **East Central Enterprise Zone**** will receive:

- acknowledgment as a Season Sponsor on all exhibit and event flyers (including Pioneer Fourth)
- recognition on signage inside the museum and at the Pioneer Fourth
- inclusion in the newsletter(s) and
- on our website



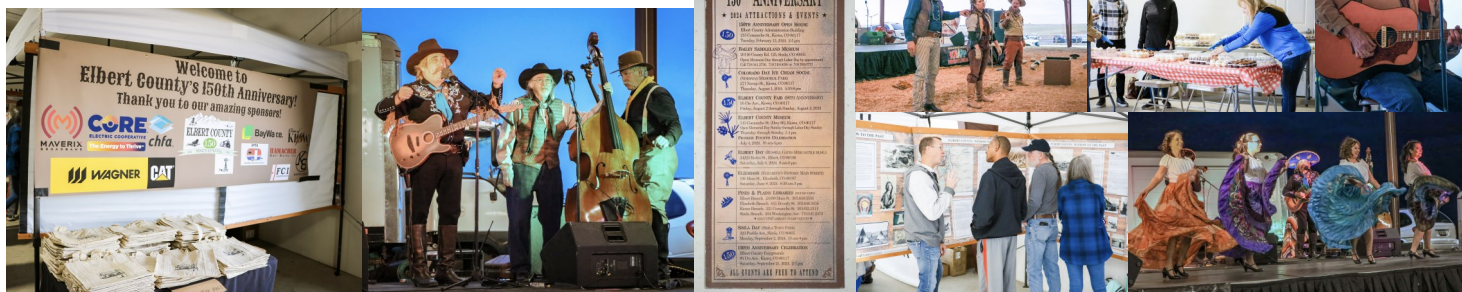
**East Central Enterprise Zone

By making a \$250 or more cash donation, **contributors receive 25% of that amount as a credit against their state tax liability (i.e.: \$250 donation = \$62.50 credit).** The contribution also may be itemized on their federal tax return.

For additional details on the different levels of **membership** or **sponsorship**, forms can be picked up at the museum's visitors desk or printed off our website at ElbertCountyMuseum.org.

150TH ANNIVERSARY BIG CELEBRATION - SEPTEMBER 21, 2024

Photos courtesy of Sarah J. Malerich Photography



2024 SEASON HIGHLIGHTS

Continued from page 1

Later in the summer the museum hosted several group tours, including a couple homeschool classes, as well as the Kiowa High School American Literature and Native American History Classes, and the Elbert Middle School History Class. ECHS also participated in the Town of Elizabeth's 10th Annual Historic Walk & Talk event at the end of September.

In closing, the museum had a record 1150 visitors this year with one couple from Sydney, Australia and another family from Lyon, France. In addition we saw an overall increase in contributions made through the ECCOG Enterprise Zone program and online at ColoradoGives.org. Thank you to our 110 Museum Season Sponsors (full list on page 6)!

FRIENDS OF THE MUSEUM

Thank you to our fantastic museum hosts for another successful season! Our docents for the 2024 Season included: Monty Ashliman, Carol Baxter, Anita Brown, Terry Courtright, John DuVall, Ruth Filonowich, Gayle Gardner, Lucy Hoffhines, Betty Hood, Dulcie Jones, Judy & Dan Kimzey, Rick & Katee Kolm, Barbara LeTourneau, Sarah Malerich, Carla Martell, Joe Martell, Annette McFadden, Debbie McManus, Sherry Metli, Helena Miller, Marge Mottinger, Verena Nelson, Patsy North, Debbie & Tom Scoggin, Evie Scott and Hank & Donna Smith.

The board of directors appreciates the dedication of all our faithful volunteers. If you would be interested in being a museum host in 2025, please call Carla Martell at 303.621.2229.

SUPPORT THE ELBERT COUNTY HISTORICAL SOCIETY & MUSEUM ON COLORADO GIVES DAY!

You can join the statewide movement and make a big impact in your community. This year Colorado Gives Day is on **December 10, 2024**, and it's easily the best day to give!

From November 1 through December 10, every donation you make will be boosted with a \$1M+ Incentive Fund, made possible by Colorado Gives Foundation and FirstBank. Each nonprofit will receive a share of the fund based on their percentage of the total raised. Plus, if you set up a new monthly donation, Colorado Gives Foundation will match your first monthly donation up to \$100 and up to \$250,000 in total across all organizations! This is a fantastic opportunity to double your impact and support historic preservation in your community.

When you donate to the Elbert County Historical Society & Museum, you're helping to ensure the museum's commitment to developing quality displays such as the Smoky Hill Trail exhibit, presenting informative historic-themed programs, and expanding educational opportunities to museum visitors and tour groups.

Visit our donation page at
www.coloradogives.org/ElbertCountyHistoricalSociety

Last year Coloradans raised over \$54 million statewide and we raised **\$1,562**. You can help us achieve even more. Thank you for your support and making this Colorado Gives Day the most successful yet!



December 10



ColoradoGivesDay.org

CENTENNIAL FARMS & RANCHES BANQUET

One of the biggest highlights of the summer was the debut of the Elbert County Centennial Farms & Ranches Banquet during the opening weekend of the county fair. The banquet was presented by the Elbert County Fair and Elbert County Historical Society in partnership with the Elbert County Sesquicentennial Committee and celebrated the eighteen Elbert County properties that have been designated through History Colorado's Centennial Farm & Ranch Program. Fourteen properties are still family owned and eleven of those families were in attendance.

The evening featured a sumptuous beef entrée dinner catered by SALT Craft Meat Market of Castle Rock. Historic cowboy poet and master of ceremonies, Sharick Wade, provided the entertainment, which included the story of John Miller, a typical Elbert County Pioneer and the original settler of the Keyhole Hereford Ranch. Two extraordinary video presentations followed: the first being a slideshow of historic and current photographs of the eleven honored properties, and the second was Saige Carnahan's 4-H Youth Project presentation on the history of her family's centennial ranch. Later the honored families were presented with a limited edition Elbert County Centennial Farms & Ranches belt buckle, crafted by Molly's Custom Silver in Arlington, Texas. Matea Zion, president of the Elbert County 4-H Leadership Council, and Hank Smith, Fourth Generation Elbert County Rancher and whose family holds the oldest county brand, assisted in the buckle presentation.

At the end of the night an announcement was made to encourage anyone who may qualify for History Colorado's Centennial Farms & Ranches program to look into that. Future banquets will honor new inductees.

The banquet was sponsored by Wagner Equipment Company and photographs taken by Tawni Combs Photography.



UPPER LEFT: VIRGIL AND JANETTE KOCHIS OF KOCHIS FARMS.

UPPER RIGHT: MASTER OF CEREMONIES, SHARICK WADE.

RIGHT: ARTIST RENDITION OF THE ELBERT COUNTY CENTENNIAL FARMS & RANCHES BUCKLE.

BELOW: BANQUET OPENING REMARKS.

ELBERT COUNTY CENTENNIAL FARMS AND RANCHES

(as of July 27, 2024)

Anderson Ranch
Beuck Land Company Ranch
Carlson Ranch**
Cedar Ridge Partners, LLC
Gordon Ranch
Keyhole Hereford Ranch**
Mundy Farm & Ranch
Sleepy Hollow**
Vermillion Farms

Ashcraft Farm & Ranch
Carl Maul Ranch
Carnahan Ranches, Inc.
Evans Cattle Company
Hertneky Homestead
Kochis Farms
Royston Farm
Spool Ranch
Vote Ranch**

**property has been sold.



Who am I?

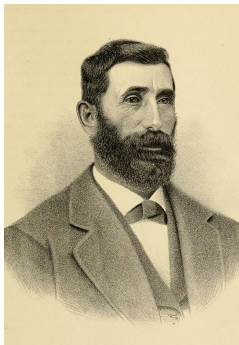
Continued from page 2

Answers: a) Eleven; c) Tailor; b) Apollinaris Dietemann

Anton Schindelholz was born in Canton Lucerne, Switzerland, on December 25, 1832, the eleventh of twelve children. At the age of 21, he went to Alsace, France, where he worked in a dairy for a time.

In 1856 he boarded the ship "Ruessel" for New York City, a voyage that took thirty-seven days and upon arriving set out for Chicago. He arrived in that city the following October with only \$3 in his pocket.

He first worked at Evans and then went to Joliet where he worked in a stone quarry. The fall of 1857 found him in Leavenworth, Kansas. While working there he became interested in the Pike's Peak Gold Rush excitement. He and a partner, Mr. Albus, started out for Denver with an ox team. Two hundred miles from Denver one of the oxen died. A party who had two yoke of oxen assisted them and they reached Denver on June 10, 1860. They sold their outfit and bought two yoke of oxen and went on to the Blue River. They prospected and mined for a time. In the fall, Anton took a load of hides back to Leavenworth. In the Spring of 1861 when he returned, he found that his partner had returned East and the claim had been jumped. He then bought a ranch on the Blue River. In 1862, he came to Denver after having saved \$500 and bought twenty-one cows and started a dairy in between Bear Creek and Golden. After selling the dairy in 1865, his



share was \$500, which he loaned to a business associate for thirty days and lost it all, which left him with nothing.

Going up on Cherry Creek, he bought one hundred head of yearling steers and one hundred head of beef cattle, the later of which he immediately sold, receiving more than enough to pay for both. He took the steers to his ranch in Elbert County where he had homesteaded in 1868 along Comanche Creek. His one-room homestead house was built of large pitch pine logs and measured 14 x 14 feet, with a floor and two small windows and loop holes from which one could watch for Indians. The house was built in a little meadow in the creek bottom near a spring which never dried up.

During the early years of Anton's life in Colorado the Indians were very troublesome and hostile, and frequently drove off the cattle of the ranchmen. More than once he was brought into personal encounter with them and more than once he suffered from their depredations.

Mr. Schindelholz was married to Marie "Mary" Dietemann, sister of Apollinaris Dietemann in 1868. To this union were born four children: Apollinaris, Anton, Maria and Edward. All the children died in their youth. Mary was a survivor of the 1868 Dietemann Massacre that killed her sister-in-law, Henrietta Dietemann, Henrietta's unborn child and young nephew, John Dietemann. Mary escaped with her life. She later divorced Anton and remarried George Wortmann.

Over the years, Anton had business partnerships with several early Elbert County settlers, including Apollinaris Dietemann, Henry Wendling and had numerous business ventures across Colorado, Kansas and New Mexico.

Anton Schindelholz died April 1902 and is buried at Riverside Cemetery in Denver.

Portrait and Biographical Record of Denver and Vicinity, 1898

FRIDAY NIGHT MARKET AND BREWERY TOUR

The weekly Friday Night Market at Elizabeth's Running Creek Park is a partnership between the Town of Elizabeth and the Elizabeth Brewing Company (EBC) that has quickly become a new favorite summer tradition filled with live music, food trucks, vendors, kid's entertainment, and locally brewed beer.

This year the Elbert County Historical Society was invited to participate, not only in the special history-themed night on July 26, but to also tour the Elizabeth Brewing Company beforehand and work with their brewmaster to make a special beer for that night.

Following an initial conversation between ECHS and EBC Brewmaster, Rickie Baumert, it was enthusiastically decided to brew a historic German *festbier* in celebration of those early immigrants who first settled in Elbert County (a *festbier* is a traditional lighter type beer served at Oktoberfest). In early July, ECHS members had the opportunity to meet Rickie, tour the Elizabeth Brewing Company and tap room, and watch the brewing process begin. When it came time to name the brew, it was suggested to name it after an early pioneer who had a decidedly Oktoberfest name - Anton Schindelholz!

On the night of July 26, historical society members mingled with market visitors at ECHS' "pop-up museum" tent, while the Schindelholz Fest made its debut at EBC's booth. Sadly the evening's festivities were cut short by a sudden downpour.

Thanks Rickie and Elizabeth Brewing Company for a fun and memorable experience!



ABOVE: THE ELIZABETH BREWING COMPANY IS LOCATED IN THE HISTORIC HUBER-CARLSON BUILDING



LEFT: PATSY NORTH, CARLA MARTELL, TOM & DEBBIE SCOGGIN, AND BREWMASTER RICKIE BAUMERT POSE DURING THE BREWERY TOUR.



ELBERT COUNTY HISTORICAL SOCIETY & MUSEUM

PO Box 43 • KIOWA, COLORADO 80117



ELBERT COUNTY MUSEUM SPONSORS

While the museum receives funds through monetary donations given at the museum and with annual historical society memberships; Season Sponsorships and the Pioneer Fourth celebration are the main areas of income which allow the Elbert County Historical Society to develop exhibits and educational opportunities and to improve and maintain the museum building.

Thank you for your commitment to the educational and historical importance of the Elbert County Museum!

LOCOMOTIVE

A Cowgirl's Heart
Boutique & Gallery
BC Building Services, Inc.
Bino's Pizza
Laurel Brown
Colorado Greenhouse
Builders, LLC
Mark & Lynn Conroe
CORE Electric Cooperative
Craft Companies
Ben & Laurie Duke
Elbert County
Abstract & Title Company
Elbert County Democrats
Elizabeth Locker Plant
Front Range Kubota
Fyzical Therapy &
Balance Center
Carl Gottbehuet
High Plains Food Store
High Prairie Survey Co.
Don Hilsberg
Lucy Hoffhines
Innovative Eyecare
Jill's Feed & Country Supply

(LOCOMOTIVE CONT.)

JR's Village Repair
Kamerzell Bros
Well & Pump Service
Kiowa Car Wash
Legacy Plow & Trailer
Jeff & Connie Lehman
Lifetime Properties Inc.
Jim & Carla Martell
Mountain View Electric Assn
Patty Ann's Café
The Prickly Pear
Prism Builds, LLC
Claude & Jane Rasmussen
Tom & Debbie Scoggin
South 40 Bar and Grill
Sun Valley Contractors, LLC
Patti Thayer
Timberline Family Dentistry, LLC
Town of Kiowa
True Value -Elizabeth

PONDEROSA PINE

360 Diesel & Auto Repair
Londell Ackley
Bare Bear Country Cuts

(PONDEROSA PINE CONT.)

Boykin Chiropractic Care, PC
Elizabeth Auto Repair
Galt, Inc.
Gordon Insurance Agency, Inc.
Christian Hertneky
HOO Motors
Pat Huddleston
IC Threads, Inc.
John Krattenmaker
MK Liquors
Tom & Marge Mottinger
Mountain Man
Fruit & Nut Co. -Elizabeth
Murdoch's Ranch & Home Supply-
Castle Rock & Parker
Napa -Elizabeth
Sheri Neuman
Patsy & Jason North
Parker Port-A-Potty
Tom Peterson
Ann Pidgeon
Rock Bottom Propane
Stitches and Threads
Betty Taylor
Marnie Tilkens
Walmart -Elizabeth
Mindy Webb

WINDMILL

1897 House "The Nest"
Adriana's Mexican Restaurant
All Wired Up Electric
Carriage Shoppes Tea Room
Carriage Shoppes Vendors
Colorado In Bloom
Margaret Coval
Dairy Queen -Elizabeth
Dusty Plains Veterinary Service
Edward Jones -Elizabeth

(WINDMILL CONT.)

Freddy's -Castle Rock
Fuzzy Pets Grooming
Gigi's Pet Grooming & Supplies
Betty Haulman
Isabel's Coffee
Debra Jacobs
Vicki Johnson
Kiowa Creek
Community Church Foodbank
KW Home Accents -Karin Royston
Barbara LeTourneau
Outback Liquor
Powder River
Running Creek Chapter DAR
Safeway -Elizabeth
Sprouts Farmers Market -Parker
Taylor Transport, LLC
William Thomas

CULTIVATOR

Advanced Quality Auto Repair
American Family Insurance
-Zachary Bough Agency
Bender Menders
Catalina's Diner
David & Linda Ehmann
Farmers State Bank of
Calhan -Kiowa Branch
Glaser Gas &
Equipment Co. -Kiowa
Katee & Rick Kolm
Harold Heckman
JC Martell
Sherry Metli
Raylene Owen
RE/MAX Accord -Elizabeth
Simla Frozen Food Locker, LLC
Smith Ranches
Unbridled Contractors, LLC