

SMOKY HILL EXPRESS

Elbert County Historical Society & Museum Newsletter

SPRING 2024

IN THIS ISSUE

Centennial Ranches Banquet	3
ECHS Board Member Honored	4
Hangman's Point	5
Historic Puzzles	4
Memberships/Sponsorships	2
Museum Sponsors	6
Pioneer Fourth 2024	3
Recurring Gifts Made Easy	3
Sesquicentennial Activities	4
Who Am I	2

THE MUSEUM IS OPEN
THURSDAY THRU SUNDAY
1:00 TO 4:00PM EVERY WEEK
DURING THE SUMMER!

UPCOMING EVENTS

Elbert County Museum
2024 Opening Day
 Sunday, May 26, 1:00 - 4:00 pm

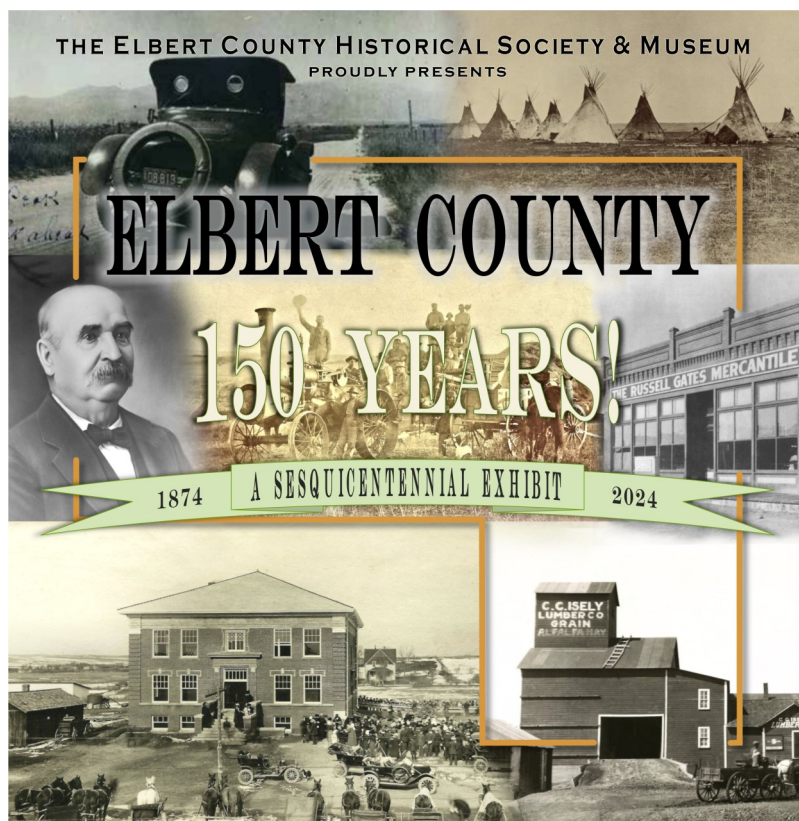
Pioneer Fourth Celebration 2024
 Thursday, July 4, 10:00 am - 3:00 pm
 Elbert County Museum Grounds

Annual Membership Meeting 2024
 Saturday, September 14, 9:00 am
 Elbert County Museum Office

DONATE NOW
 THROUGH
[COLORADOGIVES.ORG](https://coloradogives.org)

CELEBRATING ELBERT COUNTY'S SESQUICENTENNIAL

Join us as we take a nostalgic look back at some of the people, places and events that have shaped Elbert County. This year's exhibit includes displays on agriculture, early county settlements, Hangman's Point, merchants, and much more! Another new addition this year is a large county map showing the trails, trains, early post offices and towns (even ghost towns), cemeteries and other points of interest!



Elbert County was established by an act of the Colorado Territorial Legislature in February 1874, and was carved from Douglas County and a portion of the short-lived Greenwood County. Named after Territorial Governor, Samuel H. Elbert, the county's original boundaries were Douglas on the west, Arapahoe on the north, El Paso and Bent on the south and the state of Kansas on the east. This new county encompassed a whopping 6,816 square miles; making it larger than the colonial state of Connecticut and it retained this shape until 1889. Kiowa, or Middle Kiowa, as it was known then, was designated the temporary county seat.

Following the creation of the new county, the newly appointed Elbert County Commissioners met with their Douglas County cohorts to divide the common property. Douglas County received nine chairs, one stove, one pair of handcuffs and one set of shackles; while Elbert received the same number of chairs, a stove, and three pairs of handcuffs. The only safe was put up for auction which Douglas County successfully secured for \$400. There was no division of property with Greenwood County.



ELBERT COUNTY HISTORICAL SOCIETY & MUSEUM

JOE MARTELL

President

DEBBIE SCOGGIN

Secretary

PATSY NORTH

Board Member at Large

CARLA MARTELL

Past President

DONNA SMITH

Vice President

HANK SMITH

Treasurer

SARAH MALERICH

Board Member at Large

ELBERT COUNTY HISTORICAL SOCIETY

515 Comanche Street • PO Box 43
Kiowa, Colorado 80117

ElbertCountyMuseum.org

The Elbert County Museum is owned and operated by the Elbert County Historical Society, a 501 (c)(3) non-profit organization.

MISSION STATEMENT

To record and maintain the history of Elbert County, Colorado from the earliest settlement.

To work for the establishment of appropriate vaults and archives for the preservation of original manuscripts, documents, photographs and artifacts which may come into the possession of the Society.

To maintain, preserve and house the above stated articles in the Elbert County Museum.

WHO AM I?

1. Where was I born?

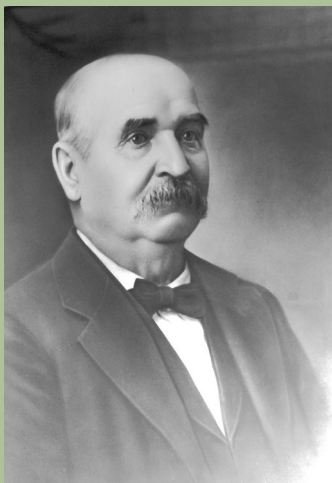
- a) America
- b) Germany
- c) Holland

2. What languages could I speak?

- a) Latin and French
- b) Dutch and Russian
- c) English and German

3. I served as Elbert County's first?

- a) Commissioner
- b) County Judge
- c) Superintendent of Schools



Answers on page 5

MEMBERSHIP LEVELS

Individual -\$15

Student/Senior -\$8

Family -\$20

Volunteer -Donation of six (6) hours of volunteer time or participate in two (2) functions and/or events.

SEASON SPONSORSHIPS

Museum Season Sponsorships are collected annually and expire at the end of each calendar year. Sponsorships support the general operating fund, new and permanent exhibits, development of educational initiatives and public programs, and the historic museum building and its infrastructure.

Season sponsorships are available at four different levels and are identified by icons of early Elbert County industry

LOCOMOTIVE-

Contributions of \$200 cash/merchandise or more will receive:

- acknowledgment as a Season Sponsor on all exhibit and event flyers (including Pioneer Fourth)
- recognition on signage inside the museum and at the Pioneer Fourth
- inclusion in the newsletter(s) and
- on our website



PONDEROSA PINE-

Contributions of \$100 cash/merchandise or more will receive:

- recognition on signage inside the museum
- inclusion in the newsletter(s) and
- on our website



WINDMILL-

Contributions over \$25 cash/merchandise will receive:

- recognition on signage inside the museum
- inclusion in the newsletter(s)



CULTIVATOR-

Contributions of \$250 cash or more through the **East Central Enterprise Zone**** will receive:

- acknowledgment as a Season Sponsor on all exhibit and event flyers (including Pioneer Fourth)
- recognition on signage inside the museum and at the Pioneer Fourth
- inclusion in the newsletter(s) and
- on our website



**East Central Enterprise Zone

By making a \$250 or more cash donation, **contributors receive 25% of that amount as a credit against their state tax liability (i.e.: \$250 donation = \$62.50 credit).** The contribution also may be itemized on their federal tax return.

For additional details on the different levels of **membership** or **sponsorship**, forms can be picked up at the museum's visitors desk or printed off our website at ElbertCountyMuseum.org.

PIONEER FOURTH CELEBRATION

Thursday, July 4 from 10:00 am to 3:00 pm
Elbert County Museum Grounds

Mark your calendars so you can plan on spending a fun-filled time celebrating Independence Day with new and old acquaintances, neighbors, and visitors. Enjoy live music, games, silent auction and viewing the exhibits inside the Museum. Don't miss out on the traditional BBQ lunch prepared fresh during midday. The cakewalk and pie auction will provide everyone the opportunity to take a delicious homemade pie or cake with them..



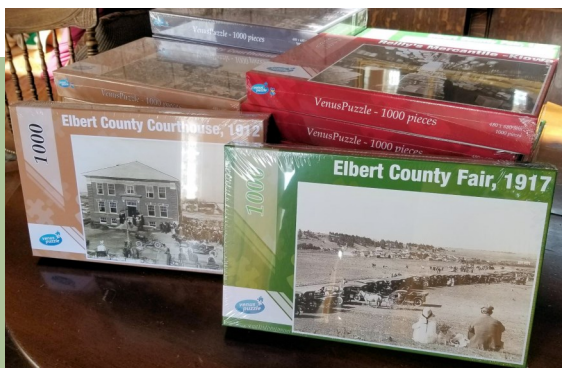
OUR FRIENDS WITH THE ROCKY MOUNTAIN MODEL A FORD CLUB
VISITED THE MUSEUM ON OPENING DAY, SUNDAY, MAY 26!

RECURRING DONATIONS: GIFTS WE CAN COUNT ON!

Your recurring donation to the Elbert County Historical Society & Museum is support we can count on!

When you use this option, you are making a commitment to donate a particular amount over a specific period of time. You can give as little as \$10 per week, month, quarter or year. Simply set up your donation schedule and your deductions will happen automatically, straight from your credit card, debit card or bank account.

To learn more about recurring donations, contact ECHS Treasurer Hank Smith at info@elbertcountymuseum.org, or visit www.ColoradoGives.org FAQs.



EXPLORE THE GIFT SHOP - HISTORIC PUZZLES AND MORE!

Be sure to visit the museum gift shop this summer for fun and unique gift giving ideas.

Celebrate Elbert County's 150th Anniversary with a collectable 1000 piece, historic photo puzzle. Choose from four captivating images.

The gift shop now accepts credit cards!



CENTENNIAL FARMS & RANCHES BANQUET

Spring has sprung and that means summer is just around the corner! Some say the best days of summer are those spent at the annual Elbert County Fair! This year the Elbert County Fair and Elbert County Historical Society in partnership with the Elbert County Sesquicentennial Committee are excited to announce an inaugural event honoring our Western heritage with a *Centennial Farms & Ranches Banquet*.

This special evening will celebrate Elbert County family farms and ranches that have been designated through History Colorado's Centennial Farm & Ranch Program and will include a delicious beef entrée dinner and program that is sure to entertain, as well as educate. The *Centennial Farms & Ranches Banquet* will take place on Saturday, July 27, 2024, at the Exhibit Building on the Elbert County Fair Grounds, with doors opening at 6:00 PM and dinner served at 6:30 PM by Elbert County 4-H program members. The evening will feature historic cowboy poet and popular artist, Sharick Wade, and include a special presentation on Elbert County's Centennial Farms and Ranches.

This "must not miss" event is open to the public with pre-purchased tickets, and anyone who would like to celebrate the contributions of Elbert County's historic farming and ranching families is invited to attend. *Tickets are limited and will not be available at the door.* Please plan to make an evening out of it and join us on Saturday, July 27.

For more information or to purchase tickets, visit www.ElbertCountyFair.com.

ABOVE: ALTHOUGH NOT A RECOGNIZED ELBERT COUNTY CENTENNIAL RANCH, THE PICTURESQUE JOE AND MINNIE JANNER RANCH WAS LOCATED WEST OF FONDIS, COLORADO, 1896.

ELBERT COUNTY SESQUICENTENNIAL ACTIVITIES

Elbert County celebrates its 150th Anniversary this year. In honor of this historic milestone, two special events are planned AND an exciting *Anniversary Ticket* program that encourages everyone to get out and explore the very best of what Elbert County has to offer during the summer, specifically each town's various fairs & festivals, our superb libraries, our 90th annual county fair, and two extraordinary museums!

Two Anniversary Events.

Join us as we celebrate Elbert County's 150th Anniversary with these commemorative events:

Centennial Farms & Ranches Banquet

Pre-purchased tickets required

July 27, 2024, 6pm

Elbert County Fairgrounds, 95 Ute Avenue, Kiowa.
For more information visit www.ElbertCountyFair.com

150th Anniversary Old West Celebration

Free and open to the public!

September 21, 2024, from 2-7pm

Elbert County Fairgrounds, 95 Ute Avenue, Kiowa
For more information visit www.ec150.com

Explore Elbert County this Summer!

Follow in the footsteps of the old pioneers and pick up your special 150th Anniversary Ticket, and then start exploring one-of-a-kind Elbert County Attractions and Events this summer!

Use your ticket to enjoy FREE ADMISSION to all the fairs, festivals, museums and libraries listed on the ticket. While you're exploring each unique destination, stop by the front desk or festival booth and ask for an "Anniversary Ticket Stamp".

When you're done, bring your ticket, with at least seven stamps, to the free 150th Anniversary Old West Celebration on September 21, 2024, and as a thank-you, we'll enter you in our drawing for either: One night for two at one of our wonderful bed and breakfasts; or Dinner for two at one of our fine restaurants; or Other assorted prizes.

150th Anniversary Tickets can be picked up at any of the participating attractions or festivals (listed below) over the summer. For more information visit www.ec150.com.

Elbert County's 150th Anniversary 2024 Attractions & Events

Bailey Saddleland Museum (Simla) -Open Memorial Day through Labor Day by appointment

Colorado Day Ice Cream Social (Kiowa) -Visit booth on Thursday, August 1, 2024, 5:30-8pm

Elbert County Fair - 90th Annual (Kiowa) -Visit booth on Friday, August 2 through August 4, 2024

Elbert County Museum (Kiowa) -Open Memorial Day Sunday through Labor Day Sunday, Thursday-Sunday, 1-4pm.

Pioneer Fourth Celebration on July 4, 2024, 10am-3pm

Elbert Day (Elbert) -Visit booth on Thursday, July 6, 2024, 8am-6pm

Elizabash (Elizabeth) -Visit booth on Saturday, June 8, 2024, 8:30am-3pm

Pines & Plains Libraries (Elbert, Elizabeth, Kiowa and Simla) -Visit any of the four library branches. Hours vary.

Simla Day (Simla) -Visit booth on Monday, September 2, 2024, 10am-4pm

150th Anniversary Celebration (Kiowa) -Visit booth on Saturday, September 21, 2024, 2-7pm



ECHS BOARD MEMBER HONORED

Elbert County Historical Society Board Member Sarah Malerich, who teaches at Kiowa High School, was recently honored by the Daughters of the American Revolution as the Outstanding Teacher of American History for the State of Colorado.

She wishes to thank Joe Martell and the rest of the Board for their support in achieving this award and for the opportunity to engage in local history in a meaningful way. Congratulations Sarah!



Who am I?

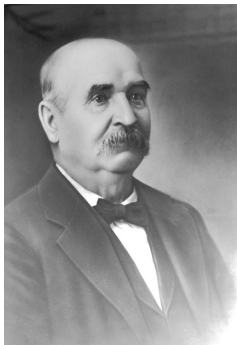
Continued from page 2

Answers: b) Germany; a & c) Latin, French, English and German; b) County Judge

Judge George Fahrion was born in Württemberg, Germany on April 16, 1836. He obtained his intellectual training in the public school of that country and there became a fluent speaker of the Latin and French languages.

In 1853 at the age of sixteen, he immigrated to America and as he came in the spring of the year encountered many bad storms on the passage, landing in New York City in April. He immediately went to Buffalo, New York, where he secured employment in a factory. One year later he moved into the country and engaged in agricultural pursuits, making a specialty of gardening and subsequently he started to Detroit by way of Lake Erie. As it was in December, the lake was unusually rough and the boat was heavily loaded with over one hundred horses and began to take on water. After a perilous voyage of twenty four hours, they were rescued by a passing boat and continued on their way to Detroit, Michigan. He remained in that city for three or four years.

In 1859 he decided to cross the plains to Colorado, but upon reaching Leavenworth, Kansas, he encountered so many returning with stories of bad luck that he became discouraged and remained where he was. Later he accepted a position freighting for the government to Fort Laramie and in the summer of 1860 he continued to Colorado, where he engaged in mining at French Gulch and later in Gilpin County. He continued in this business until September 1861, when he enlisted as a private in the 1st Regiment Colorado Cavalry, Company F, and served three years and three month. He saw hard service mostly in New Mexico and on the frontier from Texas to Utah,



taking an active part in many engagements and having many narrow escapes from death. Upon receiving his honorable discharge at Denver in November 1864, he settled on a squatter's claim in Elbert County, and after the survey of 1866, he secured by pre-exemption a tract on Section 8, Township 8 South, Range 63 West. Later homesteading a quarter section, acquired a timber claim, having in all 480 acres. He purchased other lands from time to time and at his death owned about one thousand two hundred and eighty acres of valuable land.

In the year of 1874, he was appointed to the office of County Judge of Elbert County and thru his loyalty and devotion to the people's cause he was continually elected and was serving his eighteenth term at the time of his death. He had not only retained the support of his constituents, but gained favor in the eyes of his party opponents.

On July 19, 1865, George Fahrion married Miss Elizabeth Swena of Denver, who was born in Whiteside County, Illinois, and their union resulted in six children: George, Thomas, Frank, Frederick, Alice (Wood) and Paul.

Judge Fahrion was a man of generous impulses and never forgot the hospitable ways of the pioneer. He was a man who united sound sense with strong convictions and a candid outspoken temper. He left a long and honorable career as citizen and public official and his decisions stand as a monument to fairness. Suffice to say, he lived nobly and died peacefully on December 6, 1909, at the age of 74 years.

Elizabeth was a firm and upright character, always ready to champion the right. A strong love of the beautiful was part of her nature; a fine botanist, and extremely fond of flowers. Also of a literary mind. In her early years she was a great worker in the Women's Relief Corps and the Odd Fellows' Order of Rebekahs. But most essentially, she was a home woman, devoted to her family and friends. She died at her home, outside of Kiowa on November 24, 1921. They are both buried at Elbert.

*Elbert County Banner, 1909
The Divide Review, 1921 / JCM, 2021*

SHARE THE MUSEUM

Planning a family reunion, birthday party, alumni reunion, church event, homeowner's association meeting or other special occasion this summer? Please keep the museum in mind. Doors are open four days a week,
Thursday through Sunday from 1:00 to 4:00 pm.

This would be an excellent opportunity to share with others the rich history of Elbert County.

THE STORY OF HANGMAN'S POINT (THE SHORT VERSION)

EDITOR: Elbert County witnessed vigilante justice with the hanging of four horse thieves southeast of Kiowa in the month's following its creation in 1874. Visit the museum this summer for the complete story in the exhibit: *The Story of Hangman's Point*.

HORSE THIEVES HUNG

Last week we reported the capture of a horse-thief by Constable Downing and his incarceration in the Calaboose at Colorado Springs. In due course, he was delivered to the Sheriff of Elbert County, and now the history of the whole transaction may be very briefly summed up as follows:

He found a rope, and picked it up,
And with it walked away.
It happened that to t'other end
A horse was hitched, they say.
They found a tree, and tied the rope
Unto a swinging limb.
It happened that the other end
Was somehow hitched to him.

-Colorado Springs Gazette, August 29, 1874



ELBERT COUNTY HISTORICAL SOCIETY & MUSEUM

PO BOX 43 • KIOWA, COLORADO 80117

ELBERT COUNTY MUSEUM SPONSORS

While the museum receives funds through monetary donations given at the museum and with annual historical society memberships; Season Sponsorships and the Pioneer Fourth celebration are the main areas of income which allow the Elbert County Historical Society to develop exhibits and educational opportunities and to improve and maintain the museum building.

Thank you for your commitment to the educational and historical importance of the Elbert County Museum!

LOCOMOTIVE

A Cowgirl's Heart
Boutique & Gallery
BC Building Services, Inc.
Bino's Pizza
Laurel Brown
Colorado Greenhouse
Builders, LLC
Mark & Lynn Conroe
CORE Electric Cooperative
Craft Companies
Ben & Laurie Duke
Elbert County
Abstract & Title Company
Elbert County Democrats
Elizabeth Locker Plant
Front Range Kubota
Fyzical Therapy &
Balance Center
High Plains Food Store
High Prairie Survey Co.
Don Hilsberg
Lucy Hoffhines
Jill's Feed & Country Supply
JR's Village Repair

(LOCOMOTIVE CONT.)

Kamerzell Bros
Well & Pump Service
Kiowa Car Wash
Katee & Rick Kolm
Legacy Plow & Trailer
Lifetime Properties Inc.
Jim & Carla Martell
Mountain View Electric Assn
Patty Ann's Café
The Prickly Pear
Prism Builds, LLC
Tom & Debbie Scoggin
South 40 Bar and Grill
Sun Valley Contractors, LLC
Patti Thayer
Timberline Family Dentistry, LLC
Town of Kiowa
True Value -Elizabeth

PONDEROSA PINE

360 Diesel & Auto Repair
Londell Ackley
Bare Bear Country Cuts
Boykin Chiropractic Care, PC

(PONDEROSA PINE CONT.)

Galt, Inc.
Gordon Insurance Agency, Inc.
Christian Hertneky
HOO Motors
Pat Huddleston
IC Threads, Inc.
John Krattenmaker
MK Liquors
Tom & Marge Mottinger
Mountain Man
Fruit & Nut Co. -Elizabeth
Murdoch's Ranch &
Home Supply-Parker
Napa -Elizabeth
Patsy & Jason North
Parker Port-A-Potty
Tom Peterson
Rock Bottom Propane
Stitches and Threads
Betty Taylor
Marnie Tilkens
Walmart -Elizabeth
Mindy Webb

WINDMILL

1897 House "The Nest"
Adriana's Mexican Restaurant
All Wired Up Electric
Carriage Shoppes Tea Room
Carriage Shoppes Vendors
Margaret Coval
Dairy Queen -Elizabeth
Dusty Plains Veterinary Service
Edward Jones -Elizabeth
Freddy's -Castle Rock
Fuzzy Pets Grooming
Gigi's Pet Grooming & Supplies
Betty Haulman
Isabel's Coffee

(WINDMILL CONT.)

Debra Jacobs
Vicki Johnson
Kiowa Creek
Community Church Foodbank
KW Home Accents -Karin
Royston
Barbara LeTourneau
Outback Liquor
Powder River
Running Creek Chapter DAR
Safeway -Elizabeth
Sprouts Farmers Market -Parker
Taylor Transport, LLC
William Thomas

CULTIVATOR

Advanced Quality Auto Repair
American Family Insurance
-Zachary Bough Agency
Bender Menders
Catalina's Diner
David & Linda Ehmann
Farmers State Bank of
Calhan -Kiowa Branch
Glaser Gas &
Equipment Co. -Kiowa
Harold Heckman
JC Martell
Raylene Owen
RE/MAX Accord -Elizabeth
Simla Frozen Food Locker, LLC
Smith Ranches
Unbridled Contractors, LLC